

# Imagine...

Now that we've discovered the many different types of disabilities, let's imagine what it would be like to play on the playground if you had a disability. Write down your thoughts or draw a picture in the following scenarios:

## SENSORY

You are blind and want to go on the swings. What problems might you have? What would make it easier?



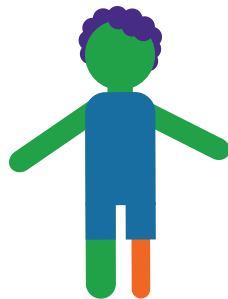
## SOCIAL / EMOTIONAL

The playground is very busy and you are nervous to be around crowds. How might you feel? What would make it easier to play?



## COGNITIVE / DEVELOPMENTAL

You have a learning disability that makes your speech sound different. You want to make new friends. What problems might you have? What would make it easier?



## PHYSICAL

You use a wheelchair and want to go down the slide. What problems might you have in accessing the slide? What would make it easier?

